

EXCLUSIVE APPOINTMENT

CP TOWER

OFFICE SPACE IN SECTION 16 OF PETALING JAYA

FACTS & FEATURES

- Centrally located in the heart of Petaling Jaya, most prominent building in the immediate vicinity.
- Highly visible and fronting SPRINT Highway.
- Adjacent to the main road, Jalan 16/11 which provides access to all public transportation systems.
- Next to Eastin Hotel and in close proximity to Phileo Damansara I & II and Menara Star .
- Easily accessible via the SPRINT Highway. Alternatively via Federal Highway, Jalan Universiti, Jalan Abu Bakar and Jalan 16/11.

SPECIFICATIONS

NO. OF STOREYS : 22

NET LETTABLE AREA : 299,482 sq.ft.

TYPICAL FLOOR PLATE : Up to 15,000 sq.ft.

CEILING HEIGHT : 12 feet

TELECOMMUNICATIONS :
Maxis, Celcom, Digi, Paneagle & Izzinet

CARPARK ALLOCATIONS :
One (1) floating bay for every 1,000sf of take up

AIR CONDITIONING :
Air Cooled Packaged Unit (Independent air Conditioning system for each floor on both wings)

BUILDING SYSTEM :
24-Hour Security System
CCTV / MATV Monitoring System
Modern Fire Fighting System

AMENITIES AVAILABLE :
Foodcourt and convenience store located on the Lower Ground Floor

OFFICE SPACE AVAILABLE :
From 3,000 sq.ft. onwards

ASKING RENTAL : From **RM4.50 PSF**



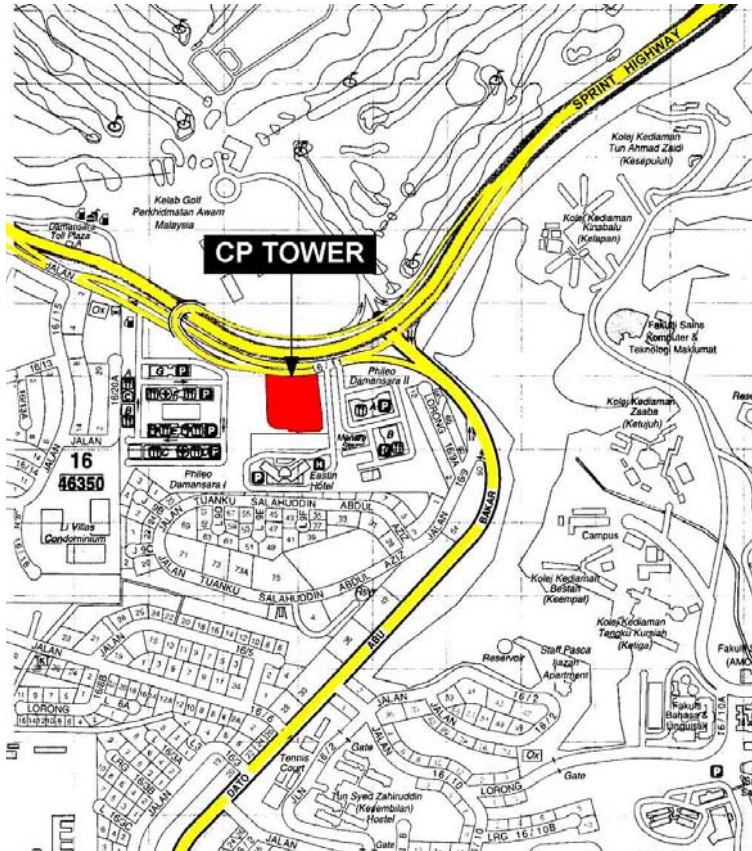
Whilst every reasonable care has been taken in the preparation of these particulars, no warranty is given or implied by both the Agent, Jones Lang Wootton and the Landlord as to the accuracy of this information. All measurements and dimensions are not to scale. Intending tenants should satisfy themselves on all pertinent matters.

EXCLUSIVE APPOINTMENT

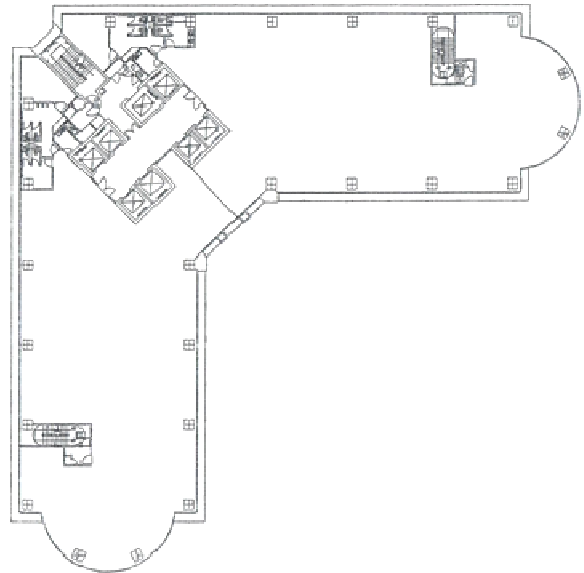
CP TOWER

OFFICE SPACE IN SECTION 16 OF PETALING JAYA

LOCATION



TYPICAL FLOOR PLAN



FOR FURTHER INFORMATION, PLEASE CONTACT:

Mr Duncan Scott

+6012-203 5745

Ms Kamini Palany

+6016-378 4478

Whilst every reasonable care has been taken in the preparation of these particulars, no warranty is given or implied by both the Agent, Jones Lang Wootton and the Landlord as to the accuracy of this information. All measurements and dimensions are not to scale. Intending tenants should satisfy themselves on all pertinent matters.